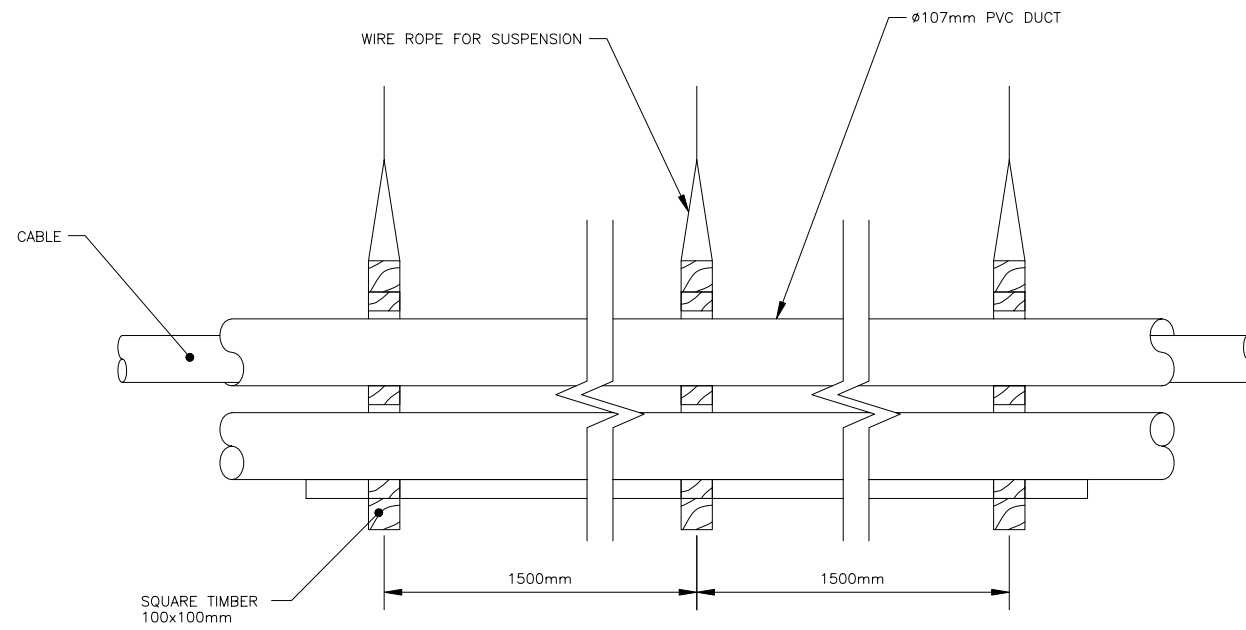


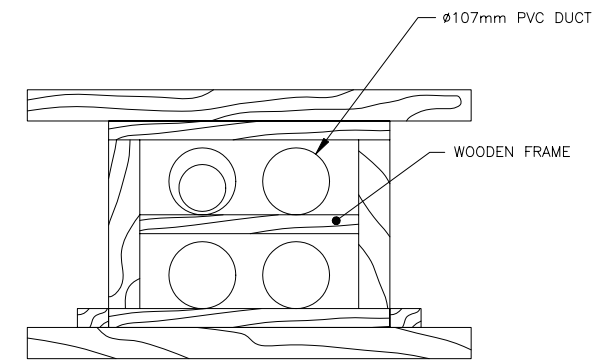
Attachment 6  
Photos of Services of Hong Kong Cable Television Ltd.



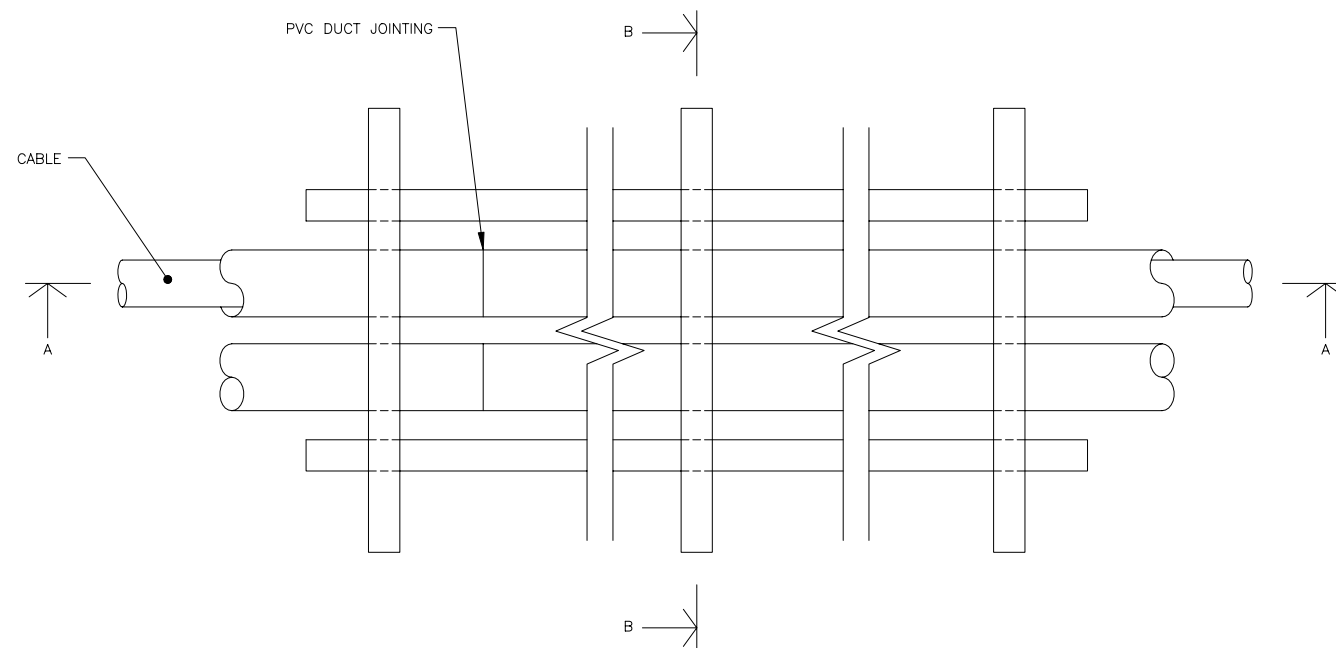




SECTION A-A



SECTION B-B  
(WIRE ROPE OMITTED CLARITY)



PLAN  
(WIRE ROPE OMITTED CLARITY)

NOTES:

No.	DATE	DESCRIPTION	BY
-----	------	-------------	----

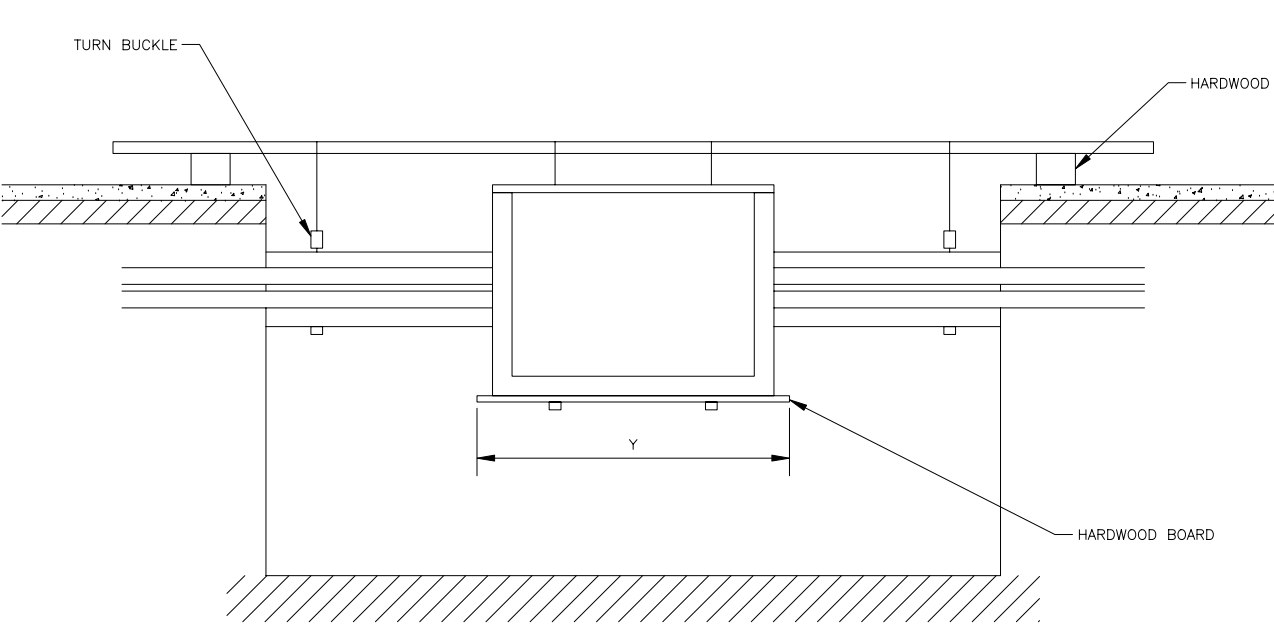
REVISIONS  
DESCRIPTION:  
TYPICAL METHOD OF  
SUPPORTING CABLES

AREA:

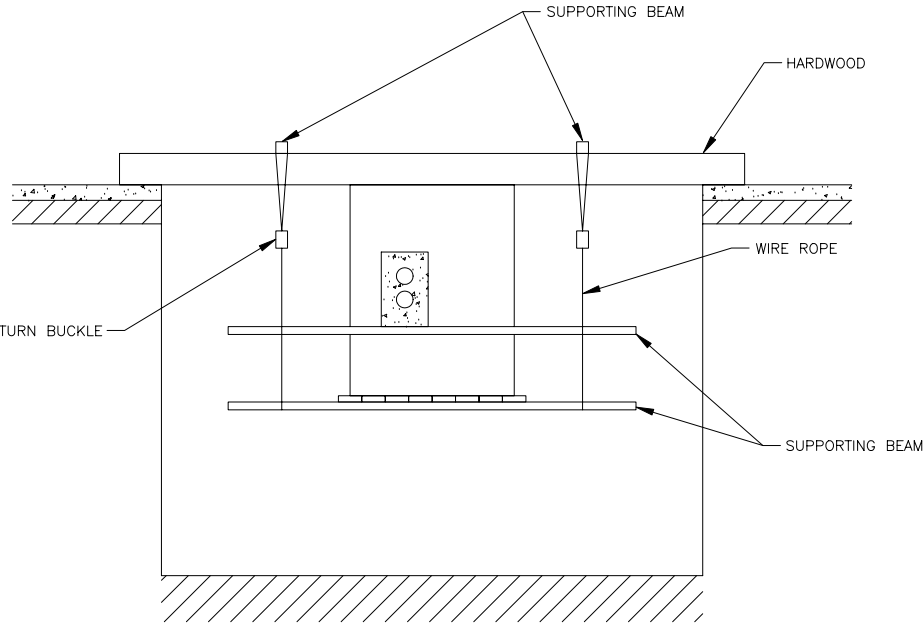
Designed by:	DEENE CHAN	Drawn by:	K. H. POON
Checked by:	BRUNO HUI	Approved by:	ALAN CHOI
Scale:	NOT TO SCALE	Date:	14 NOVEMBER 2006
Project no:		SHEET	1 OF 1
Drawing no:	TMSC01	Status:	2S
		Revision:	

1 2 3 4 5 6 7 8 9

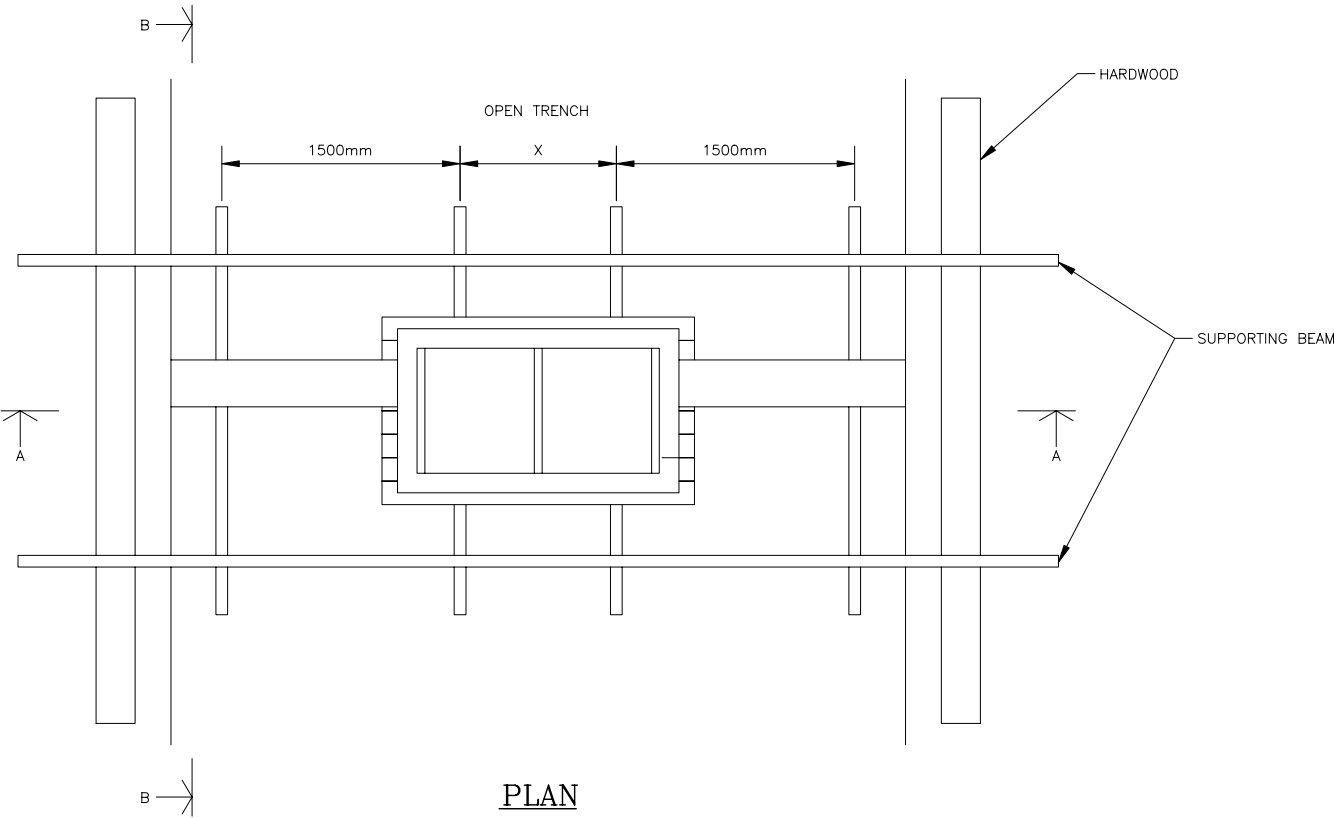
NOTES:



SECTION A-A



SECTION B-B



PLAN

DISTANCE		
	X	Y
JB 1	600mm	1300mm
JB 3	1000mm	2000mm
JB 7	1500mm	3200mm

No.	DATE	DESCRIPTION	BY
-----	------	-------------	----

REVISIONS  
DESCRIPTION:  
TYPICAL SUPPORTING METHOD  
OF JOINTING CHAMBER  
IN OPEN TRENCH

AREA:

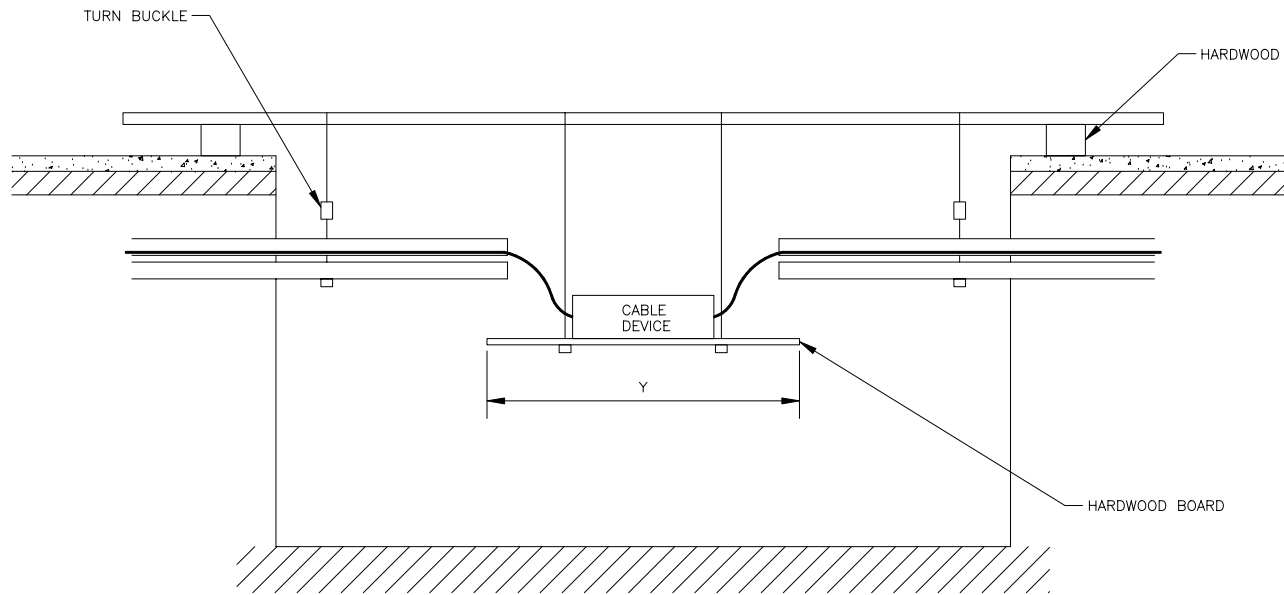
Designed by:	DEENE CHAN	Drawn by:	K. H. POON
Checked by:	BRUNO HUI	Approved by:	ALAN CHOI
Scale:	NOT TO SCALE	Date:	15 NOVEMBER 2006
Project no:		SHEET	1 OF 1
Drawing no:	TMSC02	Status:	1S
		Revision:	

**CABLE TV** 有線電視

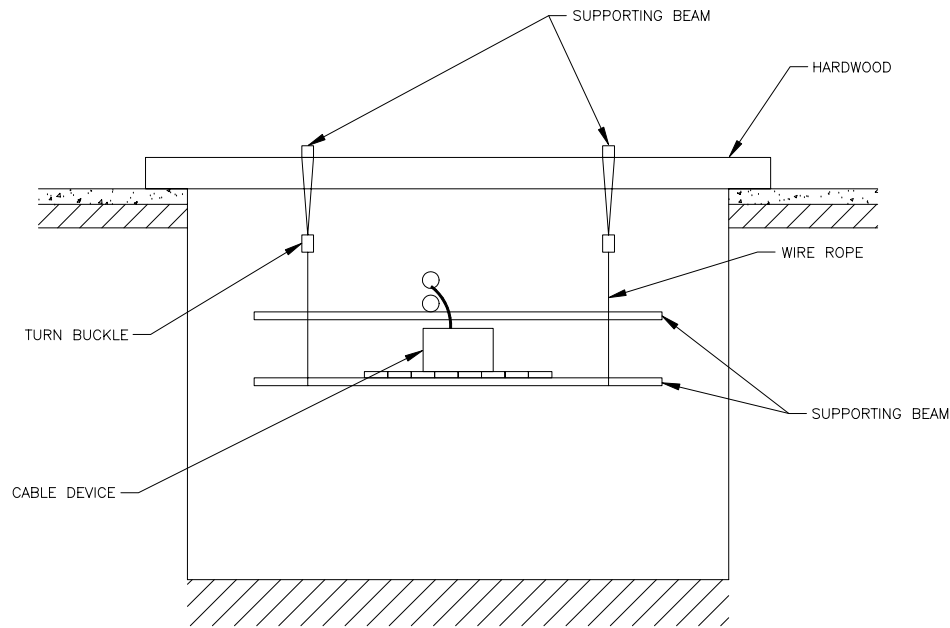
**Hong Kong Cable Television Limited**  
Cable TV Tower  
No. 9 Hoi Shing Road  
Tsuen Wan  
Tel : 21126868  
Fax : 21127878

1 2 3 4 5 6 7 8 9

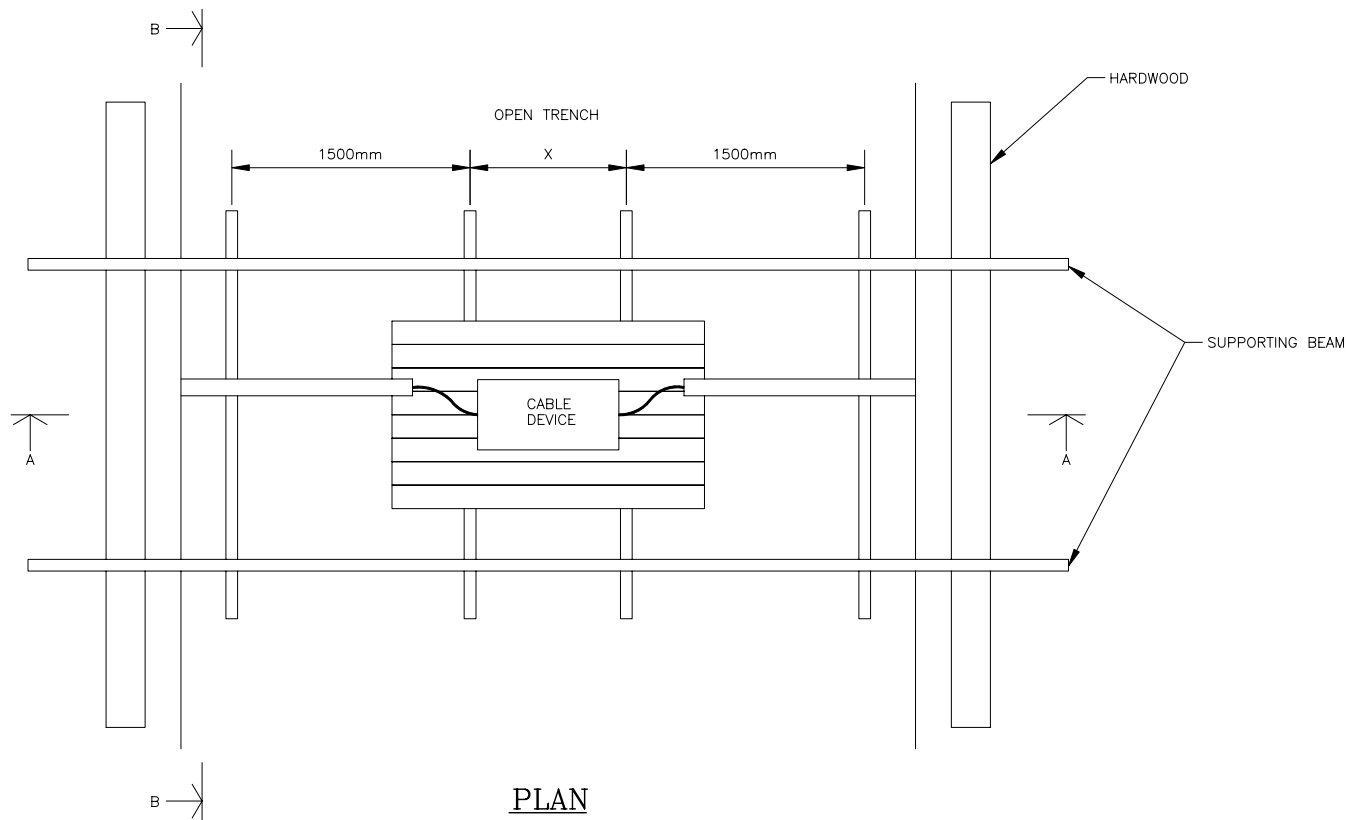
NOTES:



SECTION A-A



SECTION B-B



PLAN

DISTANCE		
	X	Y
JB 1	600mm	1300mm
JB 3	1000mm	2000mm
JB 7	1500mm	3200mm

No. DATE DESCRIPTION BY

REVISIONS

DESCRIPTION:  
TYPICAL SUPPORTING METHOD  
OF CABLE DEVICE  
IN OPEN TRENCH

AREA:

Designed by:	DEENE CHAN	Drawn by:	K. H. POON
Checked by:	BRUNO HUI	Approved by:	ALAN CHOI
Scale:	NOT TO SCALE	Date:	15 NOVEMBER 2006
Project no:		SHEET	1 OF 1
Drawing no:	TMSC03	Status:	1S
		Revision:	

1 2 3 4 5 6 7 8 9